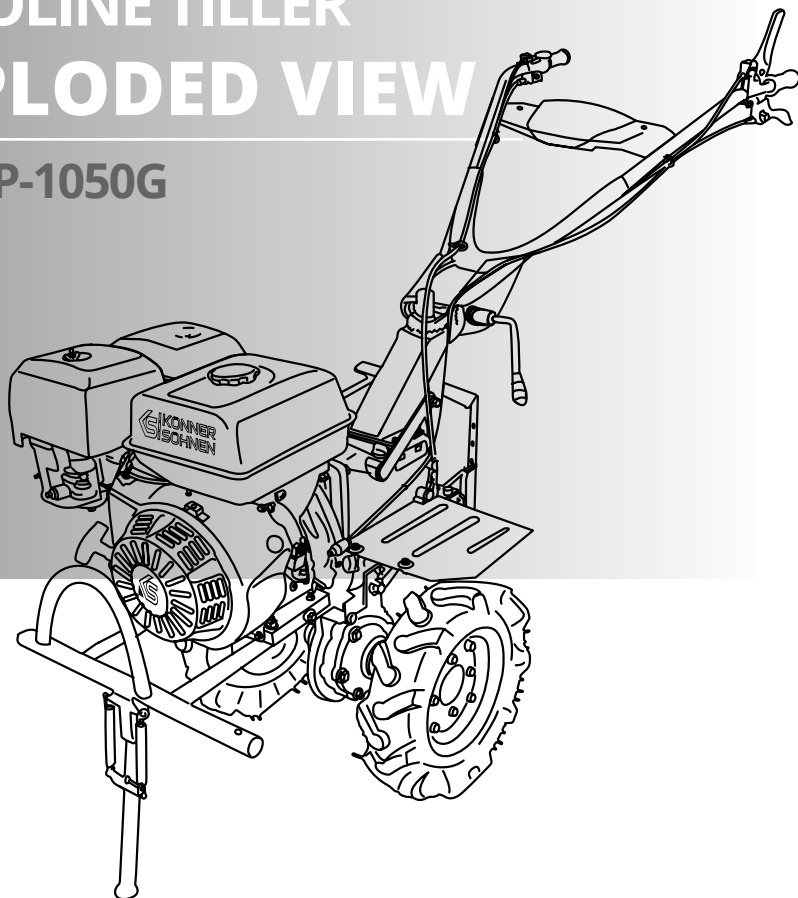


GASOLINE TILLER EXPLODED VIEW

KS 7HP-1050G



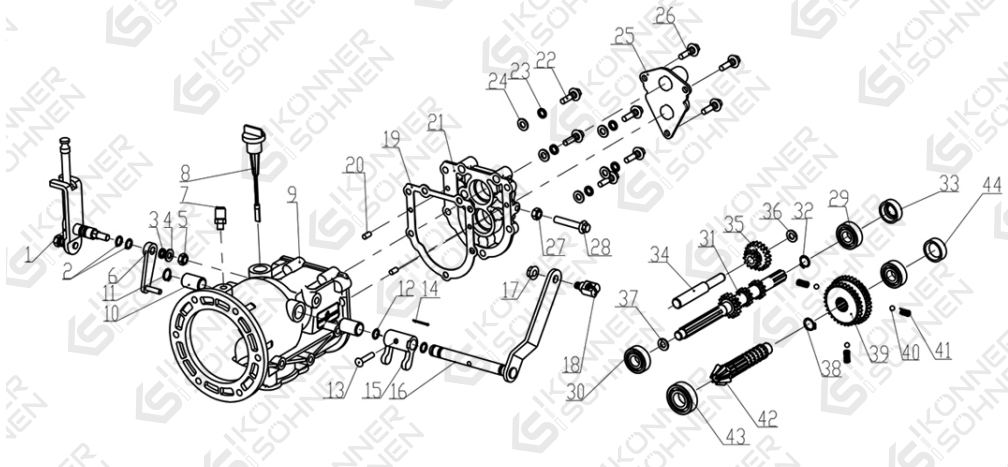
TRADITIONELLE DEUTSCHE QUALITÄT

CONTENTS

1. Gearbox assembly.....	2
2. Transmission assembly.....	4
3. Flange and Clutch assembly.....	6
4. Fender assembly.....	7
5. Armrest assembly.....	8
6. Trailer and Connecting frame assembly	10
7. Fender assembly	11
8. Rubber tire assembly	12
9. Blades assembly.....	13

! This material is for informational purposes only and is not an instruction. The connection of the equipment in each case must be performed by a certified electrician, in accordance with local laws and regulations. Before connecting, we urge you to read the recommendations in the manual for the generator. The manufacturer is not responsible for improper connection of equipment, and is not responsible for possible material and physical damage that may occur as a result of improper installation, connection or operation of equipment.

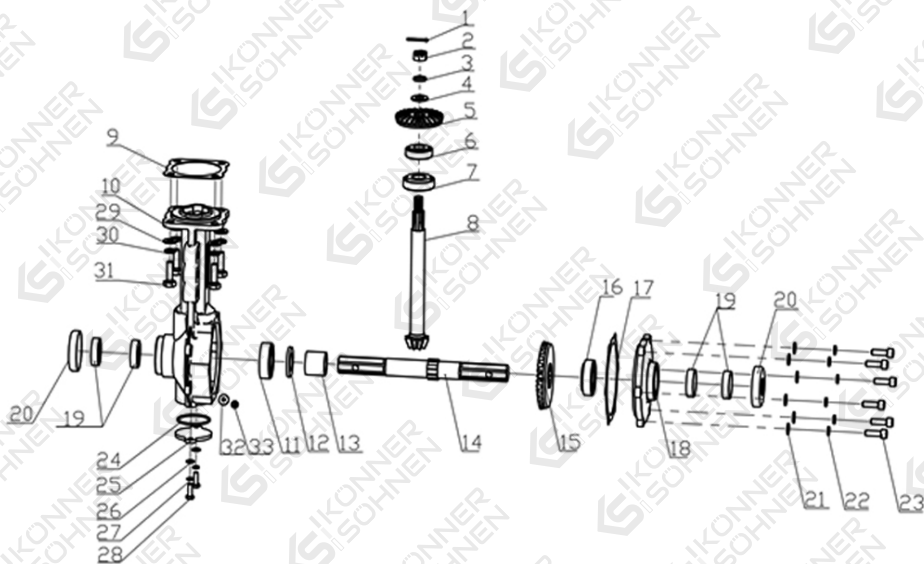
1. GEARBOX ASSEMBLY



No	REF. No	DESCRIPTION	QTY
1	KS 7HP-1050G.1.1	Shift arm assembly	1
2	KS 7HP-1050G.1.2	O-ring 10×2.0	2
3	KS 7HP-1050G.1.3	Flat Washer 8*1.6	1
4	KS 7HP-1050G.1.4	Spring washer 8*2.1	1
5	KS 7HP-1050G.1.5	Hexagon lock nut M8	1
6	KS 7HP-1050G.1.6	Shift fork	1
7	KS 7HP-1050G.1.7	Pressure relief bolt	1
8	KS 7HP-1050G.1.8	Dipstick	1
9	KS 7HP-1050G.1.9	Gearbox	1
10	KS 7HP-1050G.1.10	Clutch bushing $\phi 14^* \phi 18^* 28$	2
11	KS 7HP-1050G.1.11	Shaft retaining ring 14	1
12	KS 7HP-1050G.1.12	O-ring 9*2.65	2
13	KS 7HP-1050G.1.13	Clutch fork	1
14	KS 7HP-1050G.1.14	Cotter pin 1.6*20	1

No	REF. No	DESCRIPTION	QTY
15	KS 7HP-1050G.1.15	B-type Pin 6*28	1
16	KS 7HP-1050G.1.16	Clutch arm	1
17	KS 7HP-1050G.1.17	Clutch line seat	1
18	KS 7HP-1050G.1.18	Hexagon nut M8	1
19	KS 7HP-1050G.1.19	Gearbox back cover gasket	1
20	KS 7HP-1050G.1.20	Locating pin $\Phi 6 \times 12$	2
21	KS 7HP-1050G.1.21	Gearbox back cover	1
22	KS 7HP-1050G.1.22	Bolt M8*25	5
23	KS 7HP-1050G.1.23	Flat Washer 8*1.6	5
24	KS 7HP-1050G.1.24	Spring washer 8*2.1	5
25	KS 7HP-1050G.1.25	Spindle protection cover	1
26	KS 7HP-1050G.1.26	Bolt M8*16	3
27	KS 7HP-1050G.1.27	Hexagon nut M8	1
28	KS 7HP-1050G.1.28	Screw M8*45	1
29	KS 7HP-1050G.1.29	Deep groove bearing 6202	2
30	KS 7HP-1050G.1.30	Deep groove bearing 6003	1
31	KS 7HP-1050G.1.31	Main shaft	1
32	KS 7HP-1050G.1.32	Shaft retaining ring 15	1
33	KS 7HP-1050G.1.33	Oil seal $\phi 15 * \phi 30 * 7$	2
34	KS 7HP-1050G.1.34	Reverse shaft	1
35	KS 7HP-1050G.1.35	Reverse gear	1
36	KS 7HP-1050G.1.36	Adjusting washer $\Phi 10.6 * \Phi 18 * 1$	1
37	KS 7HP-1050G.1.37	Adjusting washer 15.5*23*0.5	1
38	KS 7HP-1050G.1.38	Shaft retaining ring 20	1
39	KS 7HP-1050G.1.39	Countershaft duplicate gear	1
40	KS 7HP-1050G.1.40	Steel ball $\Phi 6.0$	3
41	KS 7HP-1050G.1.41	Positioning spring	3
42	KS 7HP-1050G.1.42	Secondary shaft	1
43	KS 7HP-1050G.1.43	Deep groove bearing 6003	1
44	KS 7HP-1050G.1.44	Dustproof stopper $\phi 30 * \phi 27 * 6$	1

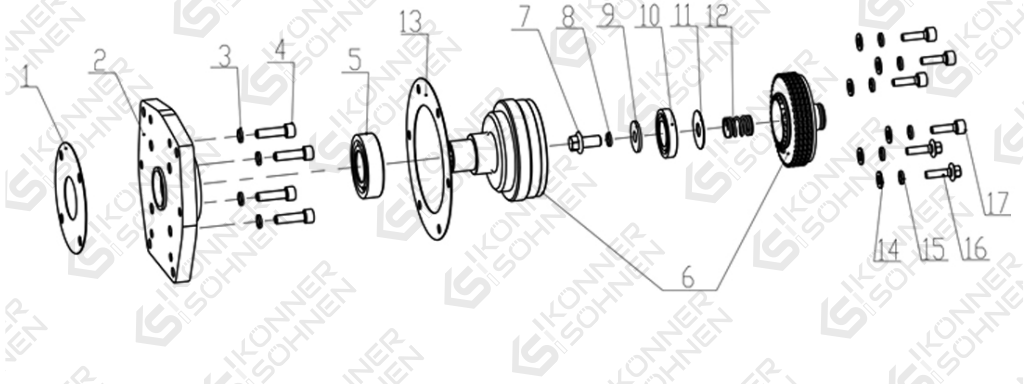
2. TRANSMISSION ASSEMBLY



No	REF. No	DESCRIPTION	QTY
1	KS 7HP-1050G.2.1	Cotter pin 2.5*25	1
2	KS 7HP-1050G.2.2	Hexagon slotted nut M12	1
3	KS 7HP-1050G.2.3	Spring washer 12*3.1	1
4	KS 7HP-1050G.2.4	Flat washer 12*2.5	1
5	KS 7HP-1050G.2.5	Countershaft gear	1
6	KS 7HP-1050G.2.6	Tapered roller bearing 30203	1
7	KS 7HP-1050G.2.7	Tapered roller bearing 30204	1
8	KS 7HP-1050G.2.8	Vertical shaft gear	1
9	KS 7HP-1050G.2.9	Walking box gasket	1
10	KS 7HP-1050G.2.10	Walking box	1

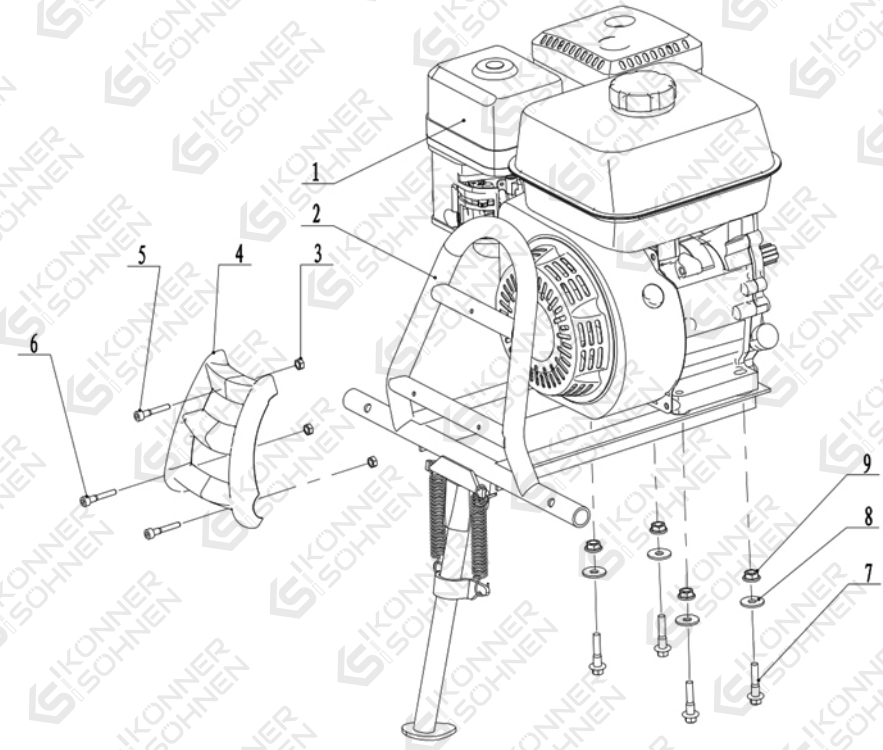
No	REF. No	DESCRIPTION	QTY
11	KS 7HP-1050G.2.11	Deep groove bearing 6205	1
12	KS 7HP-1050G.2.12	Steel gasket $\Phi 25 \times \Phi 32 \times 1$	1
13	KS 7HP-1050G.2.13	Output shaft bushing $\phi 25 \times \phi 34 \times 30.2$	1
14	KS 7HP-1050G.2.14	Output shaft	1
15	KS 7HP-1050G.2.15	Walking bevel gear	1
16	KS 7HP-1050G.2.16	Tapered roller bearing 30205	1
17	KS 7HP-1050G.2.17	Walking box end cover gasket	1
18	KS 7HP-1050G.2.18	Walking box end cover	1
19	KS 7HP-1050G.2.19	Oil seal $\phi 25 \times \phi 40 \times 7$	4
20	KS 7HP-1050G.2.20	Dust cover	2
21	KS 7HP-1050G.2.21	Spring washer 8*2.1	6
22	KS 7HP-1050G.2.22	Flat washer 8*1.6	6
23	KS 7HP-1050G.2.23	Screw M8*30	6
24	KS 7HP-1050G.2.24	O-ring 45*2.65	1
25	KS 7HP-1050G.2.25	Walking box dust board	1
26	KS 7HP-1050G.2.26	Spring washer 8*2.1	2
27	KS 7HP-1050G.2.27	Flat washer 8*1.6	2
28	KS 7HP-1050G.2.28	Bolt M8*16	2
29	KS 7HP-1050G.2.29	Spring washer 10*2.6	4
30	KS 7HP-1050G.2.30	Flat washer 10*2	4
31	KS 7HP-1050G.2.31	Bolt M10*30	4
32	KS 7HP-1050G.2.32	Aluminum gasket $\phi 10.5 \times \phi 15 \times 2$	1
33	KS 7HP-1050G.2.33	Bolt M10*12	1

3. FLANGE AND CLUTCH ASSEMBLY



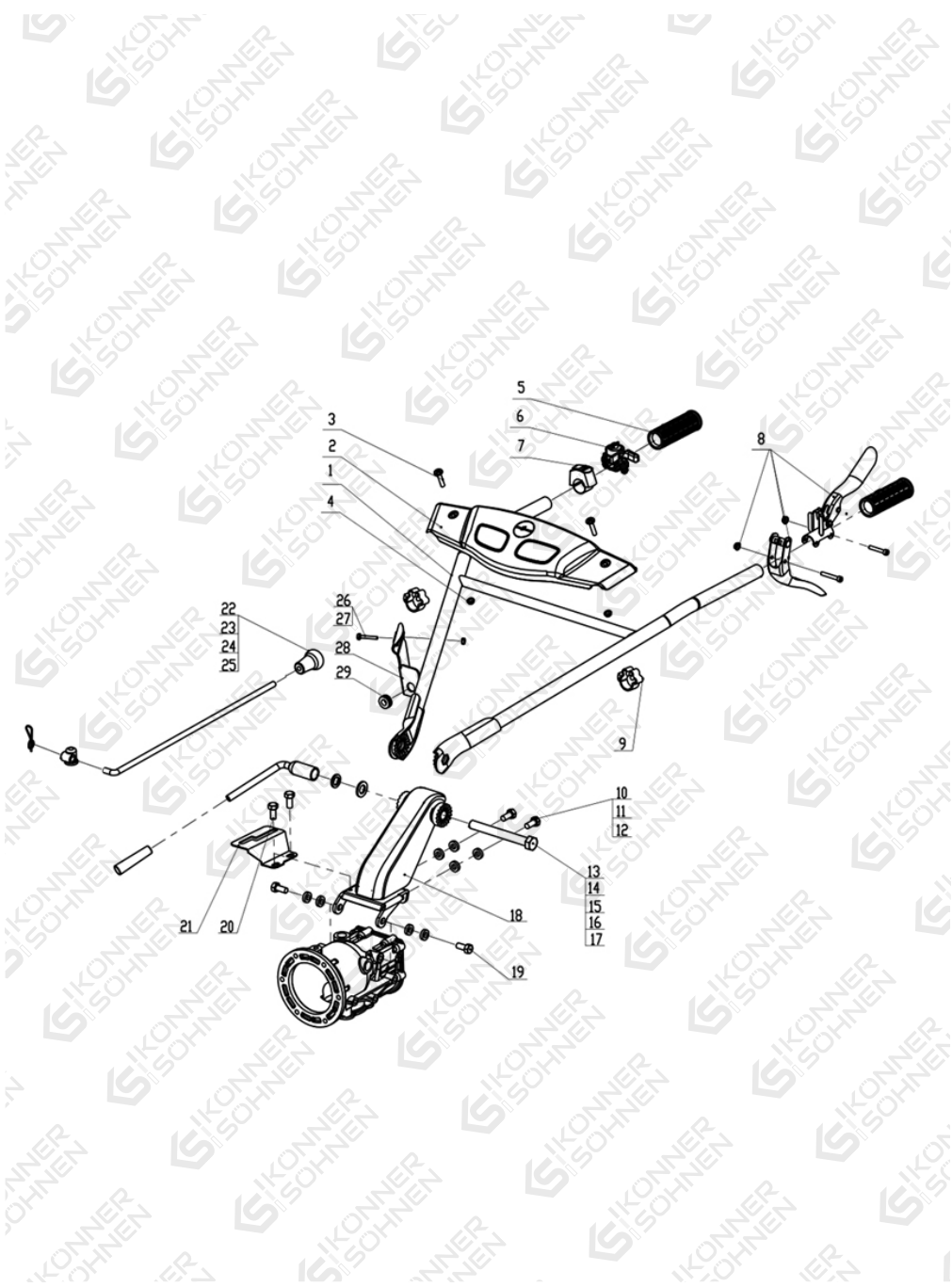
No	REF. No	DESCRIPTION	QTY
1	KS 7HP-1050G.3.1	Gasket for flange and engine	1
2	KS 7HP-1050G.3.2	Flange	1
3	KS 7HP-1050G.3.3	Flat washer 8*1.6	4
4	KS 7HP-1050G.3.4	Screw M8*30	4
5	KS 7HP-1050G.3.5	Deep groove bearing 6206	1
6	KS 7HP-1050G.3.6	Clutch assembly	1
7	KS 7HP-1050G.3.7	Screw M6*1*16	1
8	KS 7HP-1050G.3.8	Spring washer 6*1.5	1
9	KS 7HP-1050G.3.9	Flat washer 6*1.6	1
10	KS 7HP-1050G.3.10	Deep groove bearing 6201	1
11	KS 7HP-1050G.3.11	Adjusting gasket 12*24*1	1
12	KS 7HP-1050G.3.12	Clutch spring	1
13	KS 7HP-1050G.3.13	Gasket for flange and gearbox	1
14	KS 7HP-1050G.3.14	Flat washer 8*1.6	6
15	KS 7HP-1050G.3.15	Spring washer 8*2.1	6
16	KS 7HP-1050G.3.16	Bolt M8*25	2
17	KS 7HP-1050G.3.17	Screw M8*25	4

4. FENDER ASSEMBLY



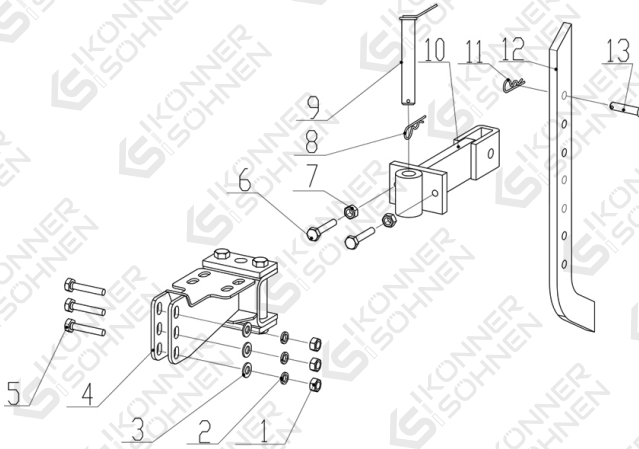
No	REF. No	DESCRIPTION	QTY
1	KS 7HP-1050G.4.1	H170F gasoline engine	
2	KS 7HP-1050G.4.2	Bumper assembly	1
3	KS 7HP-1050G.4.3	Hexagon lock nut M6	3
4	KS 7HP-1050G.4.4	Bumper trim cover	1
5	KS 7HP-1050G.4.5	Hexagon socket screw M6*1*35	1
6	KS 7HP-1050G.4.6	Hexagon socket screw M6*1*40	2
7	KS 7HP-1050G.4.7	Bolt M8*35	4
8	KS 7HP-1050G.4.8	Flat washer $\phi 8 * \phi 24 * 2$	4
9	KS 7HP-1050G.4.9	Hex flange nut M8	4

5. ARMREST ASSEMBLY



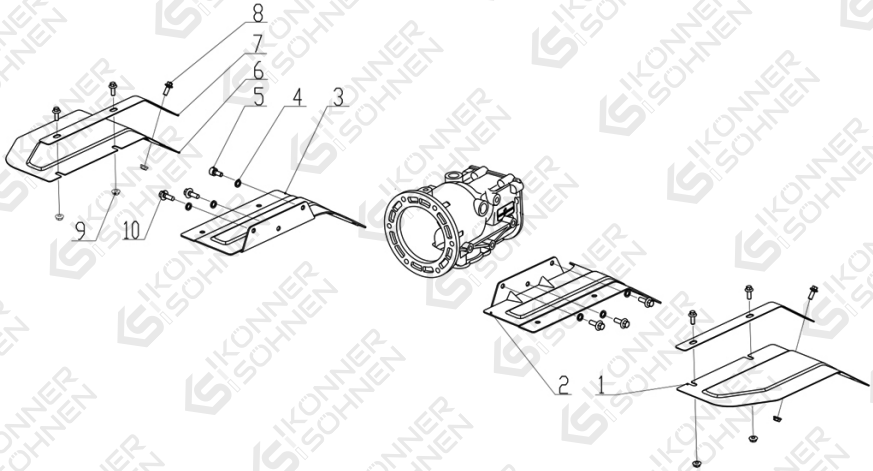
No	REF. No	DESCRIPTION	QTY
1	KS 7HP-1050G.5.1	Armrest frame	1
2	KS 7HP-1050G.5.2	Armrest frame decorative cover	1
3	KS 7HP-1050G.5.3	Cylinder screw M6*35	2
4	KS 7HP-1050G.5.4	Hex flange nut M6	2
5	KS 7HP-1050G.5.5	Handrail rubber sleeve	2
6	KS 7HP-1050G.5.6	Throttle switch assembly	1
7	KS 7HP-1050G.5.7	Flameout switch	1
8	KS 7HP-1050G.5.8	Double clutch handle assembly	1
9	KS 7HP-1050G.5.9	Line card	2
10	KS 7HP-1050G.5.10	Bolt M10*55	2
11	KS 7HP-1050G.5.11	Flat washer 10*2	4
12	KS 7HP-1050G.5.12	Spring washer 10*2.6	4
13	KS 7HP-1050G.5.13	Bolt M16*2*140	1
14	KS 7HP-1050G.5.14	Flat washer 16*3	1
15	KS 7HP-1050G.5.15	Spring washer 16*4.1	1
16	KS 7HP-1050G.5.16	Locking handle	1
17	KS 7HP-1050G.5.17	Manipulating rubber sleeve	1
18	KS 7HP-1050G.5.18	Armrest seat	1
19	KS 7HP-1050G.5.19	Bolt M10*1.5*30	2
20	KS 7HP-1050G.5.20	Bolt M8*1.25*10	2
21	KS 7HP-1050G.5.21	Shift cover	1
22	KS 7HP-1050G.5.22	Manipulating rubber sleeve	1
23	KS 7HP-1050G.5.23	Shift lever	1
24	KS 7HP-1050G.5.24	Shift lever fixing sleeve	1
25	KS 7HP-1050G.5.25	Locking clip	1
26	KS 7HP-1050G.5.26	Hexagon lock nut / M6	1
27	KS 7HP-1050G.5.27	Bolt M6*1*35	1
28	KS 7HP-1050G.5.28	Shift lever seat	1
29	KS 7HP-1050G.5.29	Rubber gasket	1

6. TRAILER AND CONNECTING FRAME ASSEMBLY



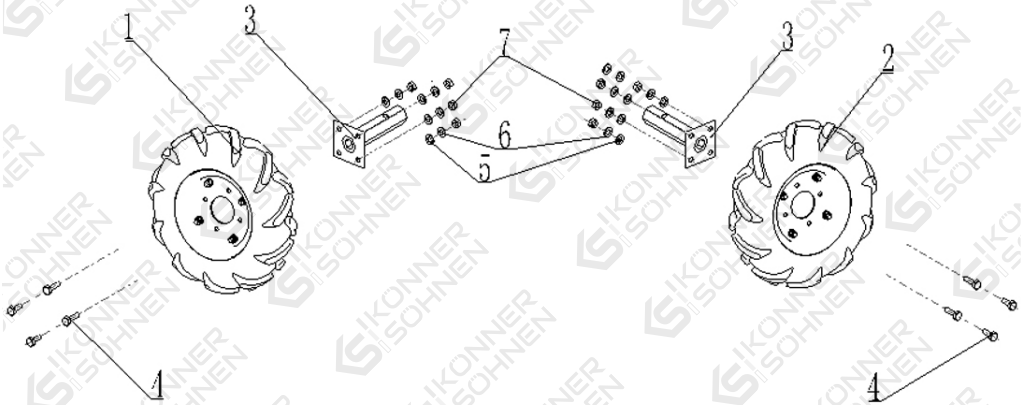
No	REF. No	DESCRIPTION	QTY
1	KS 7HP-1050G.6.1	Hex nut M10	3
2	KS 7HP-1050G.6.2	Spring washer 10*2.6	3
3	KS 7HP-1050G.6.3	Flat washer 10*2	3
4	KS 7HP-1050G.6.4	Trailer body	1
5	KS 7HP-1050G.6.5	Bolt M10*45	3
6	KS 7HP-1050G.6.6	Bolt M10*35	2
7	KS 7HP-1050G.6.7	Hex nut M10	2
8	KS 7HP-1050G.6.8	R pin 3*20*60	1
9	KS 7HP-1050G.6.9	Trailer body latch	1
10	KS 7HP-1050G.6.10	Connection bracket	1
11	KS 7HP-1050G.6.11	R pin 2*9*38	1
12	KS 7HP-1050G.6.12	Resistance bar	1
13	KS 7HP-1050G.6.13	Pin 10*40	1

7. FENDER ASSEMBLY



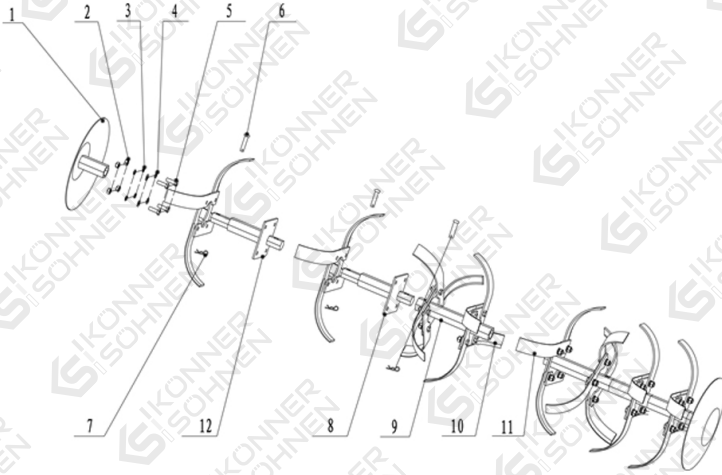
No	REF. No	DESCRIPTION	QTY
1	KS 7HP-1050G.7.1	Left side ender	1
2	KS 7HP-1050G.7.2	Left main fender	1
3	KS 7HP-1050G.7.3	Right main fender	2
4	KS 7HP-1050G.7.4	Spring washer	6
5	KS 7HP-1050G.7.5	Screw M8*16	1
6	KS 7HP-1050G.7.6	Right side fender	1
7	KS 7HP-1050G.7.7	Fender plate	2
8	KS 7HP-1050G.7.8	Bolt M6*16	6
9	KS 7HP-1050G.7.9	Hex flange nut M6	6
10	KS 7HP-1050G.7.10	Bolt M8*20	5

8. RUBBER TIRE ASSEMBLY



No	REF. No	DESCRIPTION	QTY
1	KS 7HP-1050G.8.1	4.00-10 left tire part	1
2	KS 7HP-1050G.8.2	4.00-10 right tire part	1
3	KS 7HP-1050G.8.3	Wheel axle	2
4	KS 7HP-1050G.8.4	Bolt M10*25	8
5	KS 7HP-1050G.8.5	Flat washer 10*2	8
6	KS 7HP-1050G.8.6	Spring washer 10*2.6	8
7	KS 7HP-1050G.8.7	Hex nut M10	8

9. BALDES ASSEMBLY



No	REF. No	DESCRIPTION	QTY
1	KS 7HP-1050G.9.1	Trimming wheel	2
2	KS 7HP-1050G.9.2	Hex nut / M10	32
3	KS 7HP-1050G.9.3	Spring washer 10*2.6	32
4	KS 7HP-1050G.9.4	Flat washer 10*2	32
5	KS 7HP-1050G.9.5	Bolt M10*25	32
6	KS 7HP-1050G.9.6	Pin 8*40	6
7	KS 7HP-1050G.9.7	R pin 2*9*38	6
8	KS 7HP-1050G.9.8	Vice-cylinder	2
9	KS 7HP-1050G.9.9	Main cylinder	4
10	KS 7HP-1050G.9.10	Left blade	16
11	KS 7HP-1050G.9.11	Right blade	16
12	KS 7HP-1050G.9.12	Vice-cylinder	2

CONTACTS

konner-sohnen.com

Germany

info@dimaxgroup.de

Poland

info.pl@dimaxgroup.de

Ukraine

sales@ks-power.com.ua